

# Chinley End Farm



Stephen & Mirrlees Dolley  
9 Lower Lane, Chinley, High Peak, Derbyshire. SK23 6BE

🌐 [www.peakselfcatering.co.uk](http://www.peakselfcatering.co.uk)

✉ [info@peakselfcatering.co.uk](mailto:info@peakselfcatering.co.uk)

☎ 01663 750006

## *Welcome*

We look forward to welcoming you to this delightful purpose-built first floor apartment which is attached to our 18th century former farmhouse. We are conveniently located in the centre of the village, with shops, station, restaurant, takeaway and pubs close by.

## *Location*

Chinley is surrounded by the Peak District National Park and is situated between Buxton to the south and Glossop to the north. We are only 2 miles from the A6 and ideally located for exploring the Peak District National Park which surrounds the village with Kinder Scout and Bleaklow to the north and the Derbyshire Dales and the lesser known but equally wild and interesting Goyt Valley to the south. Bugsworth canal basin is only 1 mile away and for city life, Manchester and Sheffield are only a short train ride from Chinley station which is only 3 minutes walk from the door.

Kinder Scout and many other interesting places can be explored on foot from the door, and the local train service provides for a one-way walk between here and Edale.

Buxton is only 8 miles away. With its famous opera house and dome, it claims to be the cultural capital of the Peak District. In addition to its world-famous spa it has magnificent architecture, a wealth of shops and a thriving arts scene, celebrated annually in the July Buxton Festival.

For those wishing to venture further afield, North Wales and the Lake District are only 2 hours drive away.

## Accommodation

There are two bedrooms, a kitchen-diner, lounge, balcony/patio and bathroom. Both bedrooms have a pine bed, wardrobe and table, one with a king-size and the other a single bed. In addition a guest bed can be provided if required.

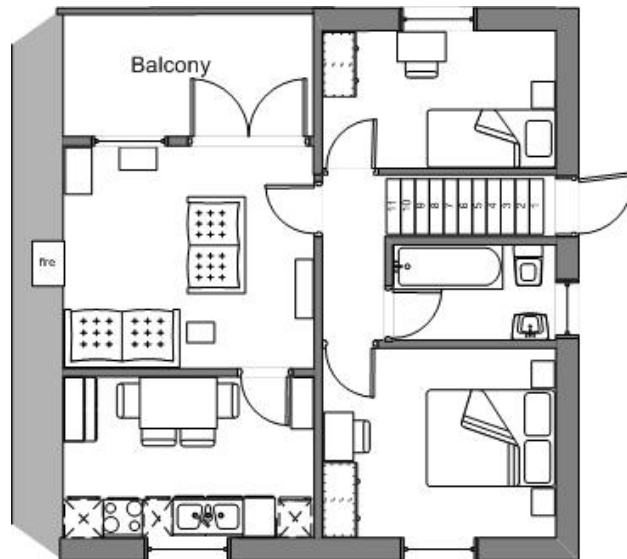
The south facing lounge has a log fire and a covered balcony with patio furniture and views of the nearby hills. This is a lovely spot for breakfast or dinner al fresco. The kitchen-diner has beautiful oak units and a full range of appliances. To relax after your day's activities the bathroom has a full size bath with thermostatic shower over.

In addition there are bicycle and boot washing facilities and garaging is available for bicycles. The balcony has a clothes line for drying clothes under cover. The garden and barbeque may be used by arrangement and there is private off street parking.

The kitchen is equipped with a dishwasher, washing machine, microwave, self-cleaning oven, toaster and full kitchen inventory.

We provide dishwasher and washing machine tablets. All bed linen and towels are provided.

The apartment has under floor heating throughout and is equipped with WIFI, HD TV (freeview) a DVD player and a DAB Radio/CD player.



## Prices

Start date	Week (Sat start)	2 nights from Friday or Saturday	3 from Friday or 4 from Monday
1 Jan – 28 March 2012	£220	£125	£150
29 March - 11 April 2012	£330	£180	£230
12 April – 30 May 2012	£275	£150	£190
31 May – 6 June 2012	£395	£220	£275
7 – 20 June 2012	£275	£150	£190
21 June – 11 July 2012	£330	£180	£230
12 July – 22 Aug 2012	£395	£220	£275
23 – 29 August 2012	£330	£180	£230
30 August – 24 Oct 2012	£275	£150	£190
25 – 31 October 2012	£330	£180	£230
1 Nov – 19 Dec 2012	£220	£125	£150
20 – 31 Dec 2012	£395	N/A	£305 (4 nights start any day) £30 per additional night

Single nights only at short notice £30 pppn.

A welcome tray of coffee, tea, sugar and milk is provided. Basic starter groceries can be provided on request at cost.

## *Directions*

Map reference: SK 039824            Post Code: SK23 6BE

Chinley End Farm is at 9 Lower Lane, Chinley. We have a huge horse chestnut tree in the front and are midway between Chinley Stores and the First Empire Chinese take-away, on the opposite side of the road.

From the south on the A6, take the 1st exit to Chinley at the roundabout just after Chapel-en-le-Frith. After 0.2m, at the roundabout take the 3rd exit towards Chinley and Hayfield (A624). Where the A624 turns sharp right under a railway bridge, go straight on to the B6062, rather than under the bridge. After 3/4 mile follow the road where it bends sharp left. 150 yards on, at Jackson's carpet shop, take the right turn to Buxworth. We are a short distance on the left.

From the north on the A6, turn very sharp left immediately after the railway bridge after Furnace Vale onto the B6062. Follow the road into Chinley. As you enter the village, we are a short distance past the sign to the station, on the right.

From Chinley station, walk south down Station Road to Lower Lane. Turn left. We are a few houses along on the right.

## *Terms and Conditions*

**Prices** include electricity, linen, towels, hot water, central heating (when required).

**Pets** are not permitted apart from assistance dogs.

**Smoking** is not permitted in the apartment or on the balcony.

**Cancellation and Insurance:** Once you have booked your holiday, our agreement is a legal contract and your deposit is non-refundable. If for whatever reason you cannot take your holiday and the booking cannot be re-let, you are still liable to pay for the booking in full, even we have not yet received your balance. If we do succeed in re-letting the booking, you are no longer liable for the balance, or we will refund it to you if you have already paid it. Please note that your deposit is not refundable under any circumstances. For this reason we strongly recommend that you take out cancellation insurance, which is inexpensive and can be obtained from any good broker.

**Non-availability of Accommodation:** We would only cancel your holiday if your accommodation was unavailable for reasons beyond our control. We would attempt to offer you alternative accommodation, however if this was not possible, or unacceptable to you, then we would refund all monies paid by you for the holiday. Our liability would not extend beyond this refund.

**Arrival:** Your accommodation will be available to you from 3pm on the day of arrival, unless otherwise arranged. Please try not to arrive earlier –we will still be busy preparing your accommodation, and won't be available to welcome you.

**Departure:** Please be ready to leave the accommodation by 10am on the day of departure, unless otherwise arranged. Please try to leave the accommodation as clean as possible.

**Damages and Breakages:** Please take care with our property. You are responsible and liable for any breakages or damages which you cause to the accommodation or its contents. Please report these as soon as they occur. We may send you an invoice for repair or making good if the damage or breakage is significant, and we may make an additional charge of £50 if you did not report this.

**Liability:** We do not accept any liability for any damage, loss or injury to any member of your party or any vehicles or possessions, unless proven to be caused by a negligent act by ourselves or our employees or contractors whilst acting in the course of employment.

**Data** collected during the course of this booking may be kept on our computer for our use only.

**Payment Details:** Chinley End Farm does not accept credit or debit cards. No money will be taken from your card. Payments must be made by cheque payable to M Dolley (or bank transfer on request of our bank details).

For all bookings we require a deposit of £100 or 1/3 of the full fee, whichever is the greater, to confirm the booking. We must receive this within 7 days of making the booking. We will send you an email or letter confirming the booking and letting you know what the outstanding balance is. The balance must then be paid at least 6 weeks before the start of the holiday. For holidays which are to take place within 6 weeks of making the booking, the full balance is due on booking.



A large print copy of this brochure is available on request.